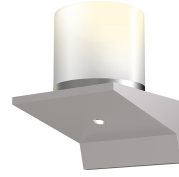


Project:

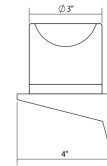
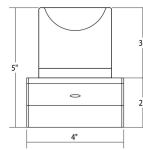
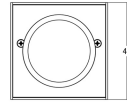
Votives LED Sconce Spec Sheet

SKU: 2850.16-LW Learn more at:
<https://sonnemanlight.com/votives-led-sconce>



Description: The dramatic repetitive arrangement of the candle-like votives establishes a cadence of light and shadow along a surface bringing a rhythm of calm, warmth, and introspection. Set in linear alignment along a **wall-mounted plinth**, **free hanging pendant** or sconce, LEDs evoke through the solid frosted glass votives. In addition, a precisely lensed LED light source beneath each votive casts its cone of illumination on the wall or surface below.

Type #:



Dimensions

Height:	5"
Width:	4"
Extends:	4"
Minimum Extension:	4"
Maximum Extension:	4"
Canopy/Backplate/Base Width:	4
Canopy/Backplate/Base Height:	2

Electrical Specs

Bulb(s) Included?:	Yes
Bulb 1 Type:	Integral LED
Bulb Quantity:	2
Input Voltage:	120VAC
Wattage:	6
Initial Lumens:	470
Delivered Lumens:	420
Color Temperature:	3000K
CRI:	90
Power Supply Type:	Driver
Power Supply Quantity:	1
Power Supply Location:	Remote
Dimming Type:	TRIAC/ELV
Bulb Max Wattage:	6

Available Color Temperatures

Available Color Temperatures: 3000k

Installation

Installation:	Licensed electrician required
Installation Orientation:	Horizontal

Shade

Shade Material:	Large Clear Etched Glass
Shade 2 Material:	Acrylic

Available Finishes

Available Finishes: Bright Satin Aluminum (.16), Satin Black (.25), Satin White (.03)

General Listings

Features:	White Supplies Last
Certification:	C-ETL-US
Color/Finish:	Bright Satin Aluminum (.16)
Dark Sky Friendly:	N